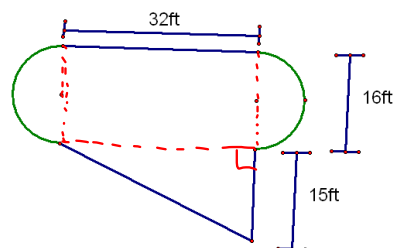


## 11.4 Areas of Irregular Figures

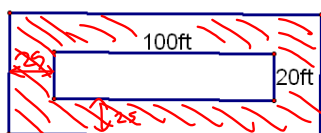


$$A_{\text{circle}} + A_{\Delta} + A_{\text{rect.}}$$

$$64\pi + \frac{1}{2}32 \cdot 15 + 32 \cdot 16$$

$$\approx 953.1 \text{ ft}^2$$

Border is 25ft wide



Find the area of the border.

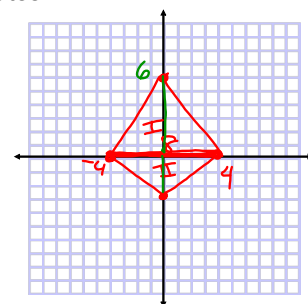
$$A_{LR} - A_{SR}$$

$$150 \cdot 70 - 100 \cdot 20$$

$$= 8500 \text{ ft}^2$$

Find the area of a quadrilateral with the following coordinates:

(-4, 0)  
(0, 6)  
(4, 0)  
(0, -3)



$$A_I + A_{II}$$

$$\frac{1}{2}8 \cdot 6 + \frac{1}{2}8 \cdot 3$$

$$24 + 12$$

$$36 \text{ u}^2$$

Hw

p619-620

8-18, 20

Not 10, 12, 16